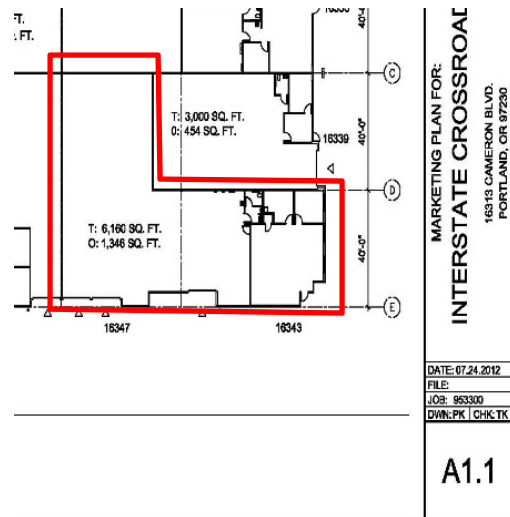
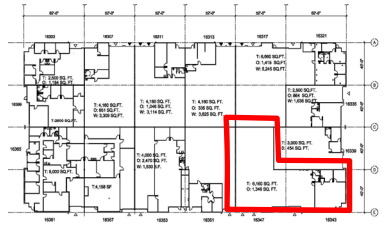




Interstate Crossroads Building 7

16343 NE Cameron Blvd, Portland, OR 97230

Space for Lease



Building Specs

Building / Shell Size: 6,160 SF
Finished Office: 1,346 SF
Availability: 2/1/2018
Clear Height: 20'
Loading: 3 Grade Doors

Network wired, fire protection

Located just off NE 158th Avenue between NE Airport Way and Marine Drive on NE Cameron Blvd. – just minutes from I-205, I-84 and Portland International Airport.

For more information, contact Three Oaks Development Co.:

Cameron J. Warren Jr.
971-236-9500 ext 2



www.threeoaks.com