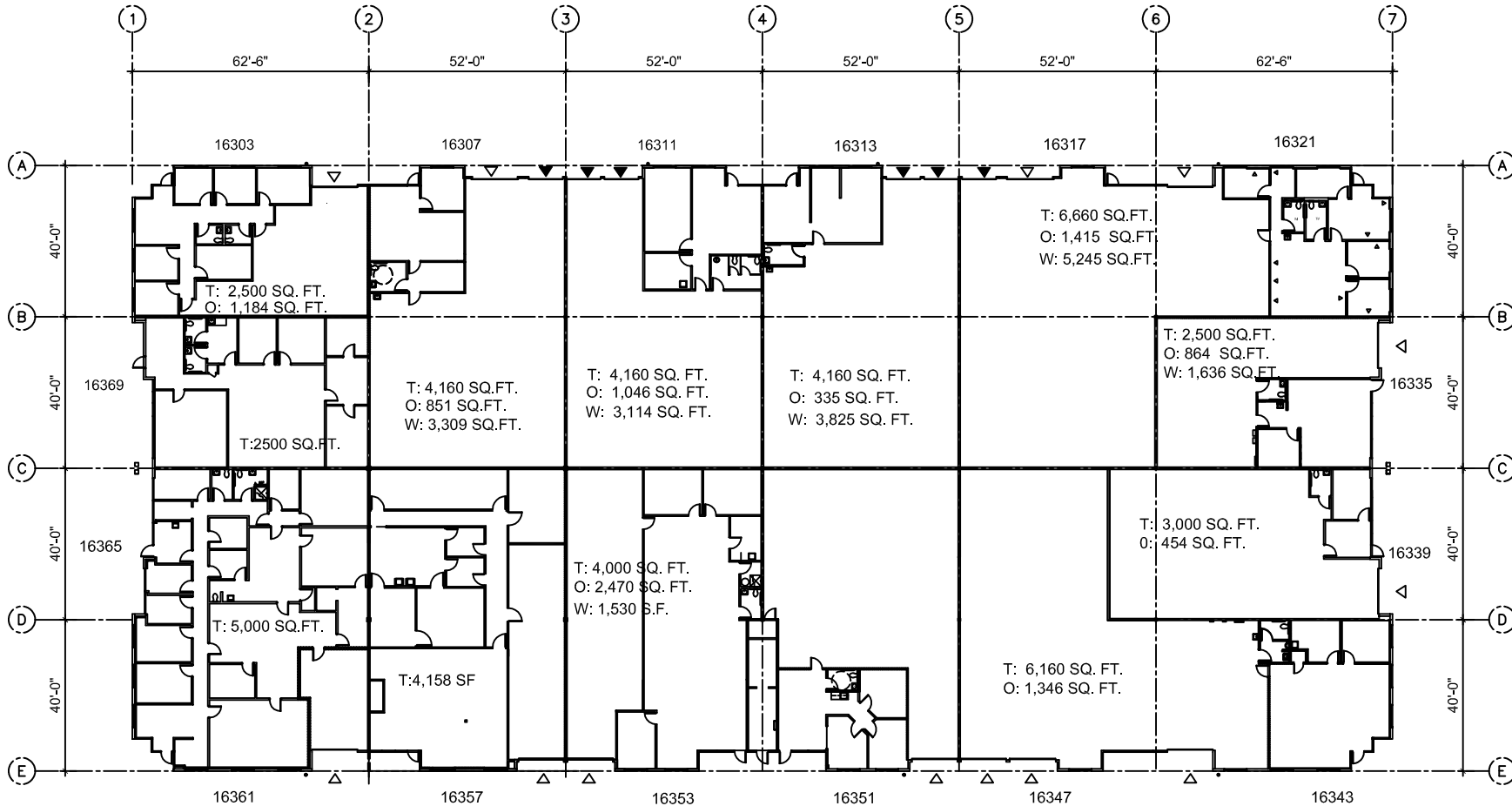


GENERAL NOTES:

- △ DRIVE-IN DOORS
- ▲ DOCK-HIGH DOORS
CLEAR HEIGHT
- FULLY FIRE SPRINKLERED
- CLEAR HEIGHT: 20'-0"



330 SE MILK Blvd, Suite 350
Portland Oregon 97214
ph: 503 235 0243
fx: 503 546 5698
TONI KING & ASSOCIATES

[TKA] space planning/commercial renovation/
interior design/dental/medical

MARKETING PLAN FOR:
INTERSTATE CROSSROADS

16313 CAMERON BLVD.
PORTLAND, OR 97230

DATE: 07.24.2012
FILE:
JOB: 953300
DWN: PK | CHK: TK

A1.1